

## Restoring Hurricane-Affected Gearboxes to

**W**hen a gear drive is submerged in seawater, the primary damage to critical components occurs through corrosion, specifically to rolling element bearings and gear elements. Underwater, this corrosion occurs at a relatively slow rate based on the water's oxygen content.

“However, when a gear drive is drained of all water and not immediately and properly serviced, exposure to the atmosphere can result in corrosion damage within a very short period of time—in as little as 24 hours,” says Jules DeBaecke, vice president of engineering at Philadelphia Gear Corp. “This condition elevates the risk of premature operational failure to unacceptably high levels.”

Philadelphia Gear offers the step-by-step procedure outlined below, and if it's followed immediately after the gear drive is drained of contaminated water, it can render the unit opera-

tional for a significant period of time before unit rebuild is required.

### Step-By-Step Procedure

- 1.) Immediately upon draining the gear drive, remove all inspection covers and thoroughly flush with hot, fresh water (150°–180°F). Deionized water, if it's available, is the optimal choice, and the unit should be consistently flushed with water not exceeding acceptable levels of chloride (0.02mg/25cm<sup>3</sup>). The primary consideration at this point is to limit accelerated corrosion damage that occurs when the gear drive's critical components (bearings, gear elements and housing internal surfaces) are not coated with oil and are exposed to the atmosphere or chlorides contained in the water.
- 2.) Flush the unit with a low viscosity oil immediately following the freshwater flush. There are several flushing products on the market with relatively low viscosity that will penetrate close tolerance components, like roll-



# Temporary Service

ing element bearings, and remove water and debris as the fluid is circulated throughout the unit. Some of these products include additives that actually absorb and remove water during the flushing process.

- 3.) During both water and oil flushings, maximum exposure of the flushing fluid to all gear drive critical surfaces and internal housing areas is required. Completely filling the gear drive with flushing fluid and immediately draining the fluid is the best way to get maximum benefit from the flushing. If it is not feasible due to gear drive size or location, the drive's internals should be thoroughly lanced through inspection ports. When lancing, do not direct lance at resistance temperature device (RTD) wires or at hydrodynamic bearings (sleeve-type babbitt bearings). Direct impingement of flushing fluid under pressure on all accessible roller element bearings, gear elements and internal housing areas should be accomplished.
- 4.) During flushing, the gear drive input shaft should be slowly rotated at regular intervals to permit the draining and lancing operations to dislodge any debris or moisture pockets that might be trapped in the gear mesh and/or rolling element bearings.
- 5.) In the event that flushing oil is not immediately available, the unit should be flushed with fresh or deionized water and then submerged in fresh or deionized water. This prevents any rapid corrosive activity due to metal surfaces being exposed to air. When flushing oil is available again, repeat steps #1 and #2.
- 6.) The gear drive lubrication system must also be cleaned and flushed in a fashion similar to the gear drive. All water-oil coolers, unit piping, relief valves, pumps, motors and filters should either be disassembled, cleaned and reassembled or replaced as required. All electrical equipment including electric motors, switches and any other electrical devices should be either replaced or serviced in accordance with equipment manufacturer's recommendations to ensure safety of operation.

# James ENGINEERING Gear Deburring Factory Direct Sales



462



*We now offer wet deburring!!!*



562

## 4 Deburring Models!

- 462 Bench top
- 562 Enclosure with dust control
- 762 Large gear enclosure (40" dia.)
- 962 Fully automatic system (3,500 parts per day)

[www.James-Engineering.com](http://www.James-Engineering.com)

4732 Pearl Street, Boulder, CO 80301  
Ph. (303) 444-6787 Fax (303) 444-6561



- 7.) Once all cleaning procedures are accomplished, the gear drive should be operated as soon as practically possible. Prior to operation, lubrication oil should be circulated through the gearbox and the lubrication unit until the filter elements remain clean since last inspection. If a centrifugal oil purifier is available, circulating the new oil charge through the purifier will aid the removal of any residual water and debris that might be dislodged during the flushings or oil circulating process. After the lubrication oil shows clean in the filters, acceptable minimal levels of water and chloride contents should be verified by either taking an oil sample or replacing the oil charge that was utilized during the oil circulating process. If the chloride content level is above acceptable levels, subsequent gear drive operation at normal operating temperatures can result in accelerated metallic component corrosion.
- 8.) Once the system is functional, the unit should be operated at the lowest possible speed and load conditions, depending on the nature of the prime mover. Any noted unusual noise or vibration will indicate significant damage, and the unit should be completely shut down and reconditioned by a quality repair facility. During initial operation, all regularly monitored parameters (oil pressures, oil inlet and outlet temperatures, bearing oil temperatures, vibration levels, etc.) should be monitored and repaired compared to previously recorded parameters taken under similar operating conditions. If there is no significant divergence in previous and current parameter magnitudes, the gear drive can be operated until such time that it can be removed from service, inspected and overhauled. This should be done at the earliest feasible opportunity.

## Problems With Your Bevel Gears?

Maybe it's because your supplier is CLUELESS

Here's CLUE #2:

### TOPOLOGICAL INSPECTION



Topological Inspection for spiral angles and pressure angles:

It's as basic as knowing the involute and lead on your helical gears

### Do You Know Your Bevel Gear Spiral Angles and Pressure Angles?

Hint: You'd know if Nissei Corporation was your supplier!

**Nissei**  
Corporation of America

[www.nissei-usa.com](http://www.nissei-usa.com)  
[sales@nissei-usa.com](mailto:sales@nissei-usa.com)

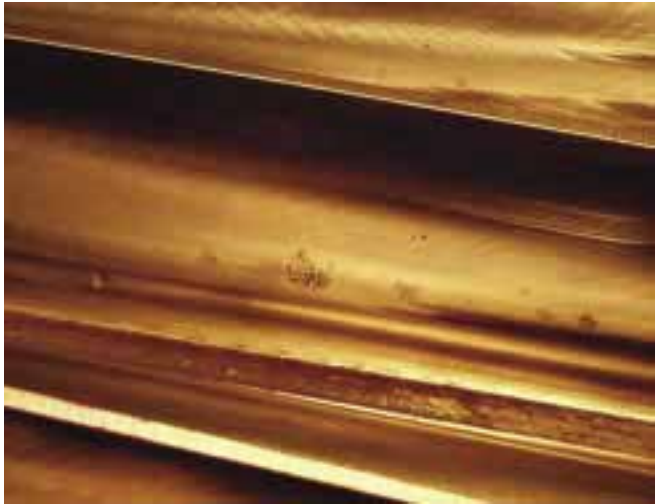
Tel: 864-289-9710  
Fax: 864-289-9711

### Gear Drive Operations After Submersion

These procedures are intended to be used when gear drive operation is required in an emergency situation. During operation and prior to unit overhaul, gear drives should be closely monitored to ensure that premature bearing or gear element degradation is not occurring. "Periodic condition monitoring should be performed on an accelerated schedule to avoid potential equipment conditions that could result in unscheduled downtime or represent an undesirable safety condition," comments DeBaecke. ■

**For more information:**

Philadelphia Gear Corp.  
1 Montgomery Plaza  
Norristown, PA 19401  
Phone: (610) 265-3000  
Internet: [www.philagear.com](http://www.philagear.com)



**Manufacturers Aid Hurricane Victims**

Weiler Corp., the Weiler family and Weiler co-workers donated to the Monroe County Red Cross for emergency financial support. A relief fund was also established with Weiler's distribution partners in the Gulf Coast to ensure that funds were specifically directed where they're needed most. Affected distributors are being provided with extended dating on all open and future invoices together with additional discounts on product purchases.

Kyocera Corp. donated \$200,000 toward relief efforts for the devastation caused by Hurricane Katrina. The company is also providing more than 1,000 wireless phone handsets for victims of the hurricane and for a mobile telecommunications network being established in the New Orleans area for military and local authorities conducting evacuation and recovery efforts.

**FIRST GEAR**  
ENGINEERING & TECHNOLOGY

**"YOUR FIRST CHOICE"**

For Outsourcing Your Gear Manufacturing | From Prototypes to High Volume Production

Visit our website for more info  
[www.first-gear.com](http://www.first-gear.com)

ISO 9001:2000 CERTIFIED

7606 Freedom Way • Fort Wayne, IN 46818  
Tel: (260) 490-3238 • Fax: (260) 490-4093  
[www.first-gear.com](http://www.first-gear.com)

**SDPSI**  
Stock Drive Products/Sterling Instrument

**GEARS**

MANUFACTURE GEARS TO YOUR SPECIFICATIONS

*Commercial to Precision*

9001:2000 ISO Registered

Phone: 516-328-3300  
[www.sdp-si.com/e-Store](http://www.sdp-si.com/e-Store)